

## Tube Cutters

### CT-274 >>>

For 1/8" to 1-1/8" (4~28mm) O.D. tubing



### CT-312 >>>

For 1/4" to 1-5/8" (7~41mm) O.D. tubing



### CT-206 >>>

For 3/8" to 2-5/8" (10~66mm) O.D. tubing



### CT-105 >>>

For 1/8" to 1-3/8" (3~35mm) O.D. tubing



### CT-107 >>>

For 1/4" to 2" (6~50mm) O.D. tubing



### CT-205 >>>

For 1/4" to 2-5/8" (6~67mm) O.D. tubing



### CT-126 >>>

For 1/8" to 5/8" (3~15mm) O.D. tubing



### CT-127 >>>

For 1/8" to 5/8" (4~15mm) O.D. tubing



### CT-128 >>>

For 1/8" to 7/8" (3~22mm) O.D. tubing



### CT-129 >>>

For 1/8" to 1-1/8" (3~28mm) O.D. tubing



### CT-174 >>>

For 3/8" to 1-1/8" (10~28mm) O.D. tubing



CT-150B  
CT-206B



CT-105B  
CT-107B

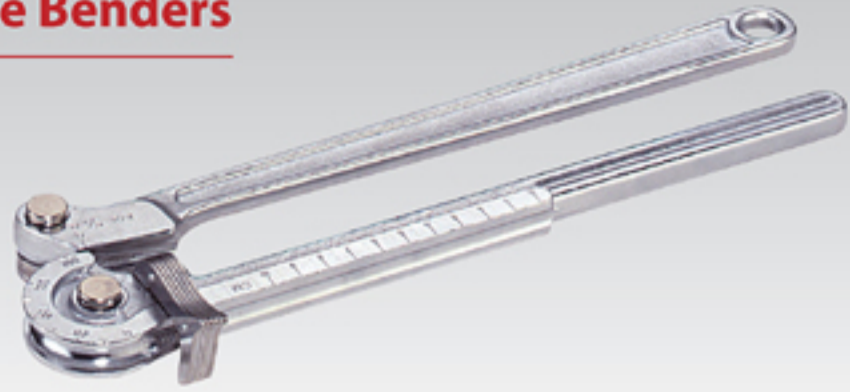


CT-129B  
CT-174B  
CT-274B  
CT-312B



CT-126B  
CT-127B  
CT-128B

## Heavy Duty Lever-Type Tube Benders



### >>> INCH SIZE TUBE BENDER

Item No.	Outside diameter of tube (inch)	Radius to center of tube (inch)
CT-366A-06	1/4"	9/16"
CT-366A-08	5/16"	11/16"
CT-366A-10	3/8"	15/16"
CT-366A-12	1/2"	1-1/2"

### METRIC SIZE TUBE BENDER

Item No.	Outside diameter of tube (mm)	Radius to center of tube (inch)
CT-366M-06	6	9/16"
CT-366M-08	8	11/16"
CT-366M-10	10	15/16"
CT-366M-12	12	1-1/2"



### >>> EXTERNAL SPRING-TYPE TUBE BENDERS

Item No.	Size (inch)	Length (mm)
CT-102-04	1/4"	250
CT-102-05	5/16"	250
CT-102-06	3/8"	250
CT-102-08	1/2"	250
CT-102-10	5/8"	250
CT-102-12	3/4"	250

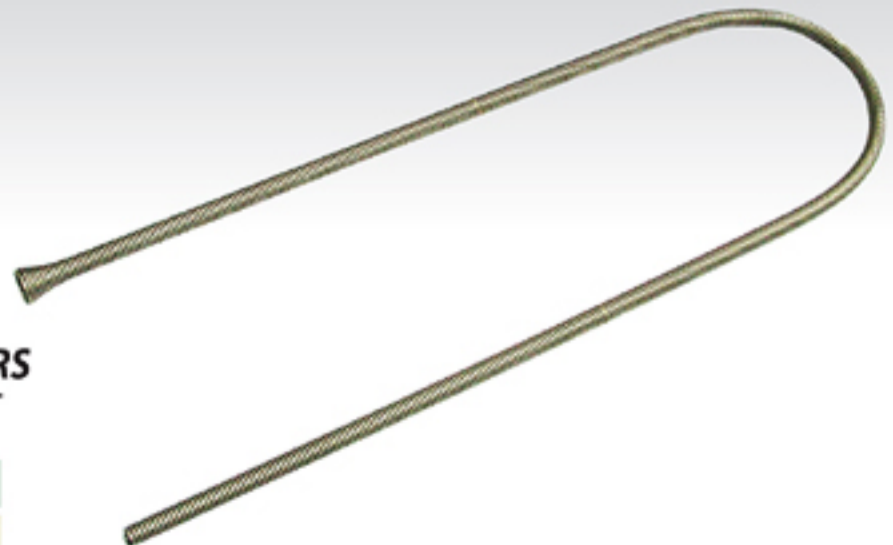
#### CT-102-6P:

CT-102-04 1/4", CT-102-05 5/16", CT-102-06 3/8"

CT-102-08 1/2", CT-102-10 5/8", CT-102-12 3/4"

### >>> CT-202 STAINLESS SPRING-TYPE TUBE BENDERS

Item No.	Size (inch)	Length (mm)
CT-202-06	3/8"	1500
CT-202-08	1/2"	1500
CT-202-10	5/8"	1500
CT-202-12	3/4"	1500



## Multi-Size Tube Benders Set

### CT-999AL >>>

For 1/4", 5/16", 3/8", 1/2", 5/8", 3/4" & 7/8" O.D. tubing.  
With special reverse direction bending function.  
In blow-mold carrying case.

### CT-999S

For 1/4", 5/16", 3/8", 1/2", 5/8", 3/4" & 7/8" O.D. tubing.  
In blow-mold carrying case.

### CT-999MS

For 6mm/8mm/10mm/12mm/16mm/19mm/22mm O.D. tubing.  
In blow-mold carrying case. **Only made with special order.**

### CT-999ML

For 6mm/8mm/10mm/12mm/16mm/19mm/22mm O.D. tubing.  
With special reverse direction bending function.  
In blow-mold carrying case. **Only made with special order.**



## Multi-Size Tube Benders



### >>> CT-367

For 1/8", 3/16" & 1/4" O.D. tubing.(3mm/4mm/6mm O.D.)  
9/16" radius to center of tube

### CT-368 >>>

For 1/4", 5/16" & 3/8" O.D. tubing. 11/16" radius to center of tube

### CT-368M

For 6mm/8mm/10mm O.D. tubing. 11/16" radius to center of tube  
**Color: ORANGE**



### >>> CT-369

For 3/16", 1/4", 5/16" & 3/8" O.D. tubing.

## Lever-Type Tube Benders



### >>> INCH SIZE TUBE BENDER

Item No.	Outside diameter of tube (inch)	Radius to center of tube (inch)
CT-364A-04	1/4"	9/16"
CT-364A-05	5/16"	11/16"
CT-364A-06	3/8"	15/16"
CT-364A-08	1/2"	1-1/2"
CT-364A-10	5/8"	2-1/4"
CT-364A-12	3/4"	3"
CT-364A-14	7/8"	3"
CT-364A-10-4	5/8"	4"
CT-364A-12-4	3/4"	4"
CT-364A-14-4	7/8"	4"

### METRIC SIZE TUBE BENDER

Item No.	Outside diameter of tube (mm)	Radius to center of tube (inch)
CT-364M-06	6	9/16"
CT-364M-08	8	11/16"
CT-364M-10	10	15/16"
CT-364M-12	12	1-1/2"
CT-364M-16	16	2-1/4"
CT-364M-19	19	3"
CT-364M-22	22	3"
CT-364M-16-4	16	4"
CT-364M-19-4	19	4"
CT-364M-22-4	22	4"

## Flaring Tool Kits

**>>> CT-195**  
For 3/16", 1/4", 5/16", 3/8", 7/16", 1/2", 5/8" O.D. tubing.

**CT-395**  
For 4mm/6mm/8mm/10mm/12mm/14mm/16mm O.D. tubing.



**>>> CT-1226**  
CT-195 + CT-274  
For 3/16", 1/4", 5/16", 3/8", 7/16", 1/2", 5/8" O.D. tubing.  
in plastic case.

**CT-1227**  
CT-395 + CT-274  
For 4mm/6mm/8mm/10mm/12mm/14mm/16mm O.D. tubing.  
in plastic case.



**CT-1226L**  
CT-195 + CT-274  
For 3/16", 1/4", 5/16", 3/8", 7/16", 1/2", 5/8" O.D. tubing.  
in blow-mold carrying case.

**CT-1226LA**  
CT-195 + CT-274 + 5 Double Flaring Adapters  
For 3/16", 1/4", 5/16", 3/8", 7/16", 1/2", 5/8" O.D. tubing.  
Includes 5 double flaring adapters which cover 3/16", 1/4", 5/16", 3/8" & 1/2" in blow-mold carrying case.

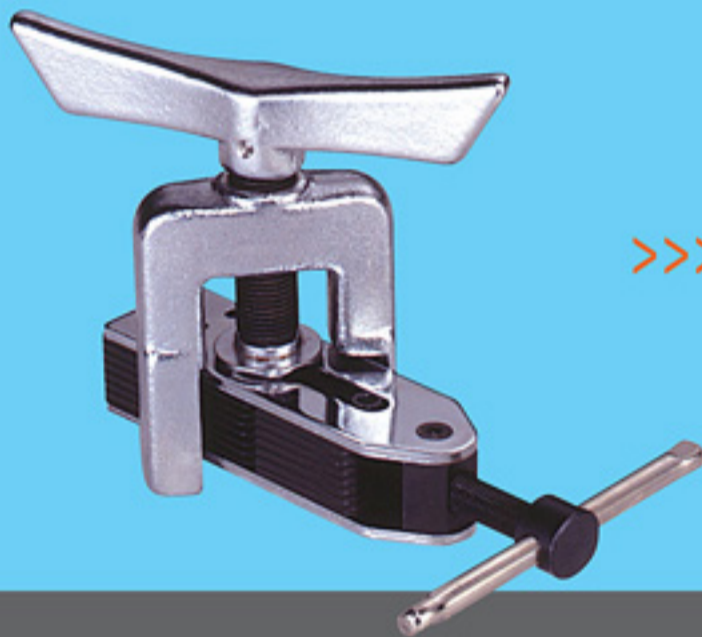
**CT-1227L**  
CT-395 + CT-274  
For 4mm/6mm/8mm/10mm/12mm/14mm/16mm O.D. tubing.  
in blow-mold carrying case.

**CT-1227LA**  
CT-395 + CT-274 + 5 Double Flaring Adapters  
For 4mm/6mm/8mm/10mm/12mm/14mm/16mm O.D. tubing.  
Includes 5 double flaring adapters which cover 4mm, 6mm, 8mm, 10mm & 12mm in blow-mold carrying case.



>>> **CT-103**  
For 3/4", 7/8" & 1" O.D. tubing.

**CT-203**  
For 5/8", 3/4", 7/8" & 1 1/8" O.D. tubing.



>>> **CT-525**  
For 3/16" to 5/8" (4.7mm~16mm) O.D. tubing.



>>> **CT-197A**  
For 3/16", 1/4", 5/16", 3/8", 1/2", 5/8" & 3/4" O.D. tubing.



>>> **CT-275**

*CT-275 Flaring & Swaging Tool*

For 1/8", 3/16", 1/4", 5/16", 3/8", 7/16", 1/2", 5/8" & 3/4" O.D. tubing. Includes 5 swage adapters which cover 3/16"~1/4"~3/8", 5/16", 1/2", 5/8" & 3/4" in plastic case.

**CT-275M**

*CT-275 Flaring & Swaging Tool*

For 4mm/4.75mm/6mm/8mm/10mm/12mm/14mm/16mm/19mm O.D. tubing. Includes 5 swage adapters which cover 4~6~10mm, 8mm, 12mm, 16mm & 19mm in plastic case.

>>> **CT-275L**

*CT-275 Flaring & Swaging Tool*

For 1/8", 3/16", 1/4", 5/16", 3/8", 7/16", 1/2", 5/8" & 3/4" O.D. tubing. Includes 5 swage adapters which cover 3/16"~1/4"~3/8", 5/16", 1/2", 5/8" & 3/4" in blow-mold carrying case.

**CT-275ML**

*CT-275 Flaring & Swaging Tool*

For 4mm/4.75mm/6mm/8mm/10mm/12mm/14mm/16mm/19mm O.D. tubing. Includes 5 swage adapters which cover 4~6~10mm, 8mm, 12mm, 16mm & 19mm in blow-mold carrying case.



>>> **CT-276AL**

*Flaring & Swaging Tool*

For 3/16", 1/4", 5/16", 3/8", 1/2", 5/8" & 3/4" O.D. tubing. Includes 5 double flaring adapters which cover 3/16"~1/4"~3/8", 5/16", 1/2", 5/8" & 3/4" in blow-mold carrying case.

>>> **CT-278L**

*CT-275 + CT-274 + CT-122*

For 1/8", 3/16", 1/4", 5/16", 3/8", 7/16", 1/2", 5/8" & 3/4" O.D. tubing. Includes 5 swage adapters which cover 3/16"~1/4"~3/8", 5/16", 1/2", 5/8" & 3/4" in blow-mold carrying case.



## Eccentric Cone Flaring Tool

For R410a/R22



### >>> CT-806AL

CT-806A + CT-274 + CT-208

For 1/4", 5/16", 3/8", 1/2", 5/8", 3/4" O.D. tubing.  
in blow-mold carrying case.

### CT-806ML

CT-806M + CT-274 + CT-208

For 6mm/8mm/10mm/12mm/16mm/19mm O.D. tubing.  
in blow-mold carrying case.

### CT-808AL

CT-808A + CT-274 + CT-208

For 3/16", 1/4", 5/16", 3/8", 1/2", 5/8", 3/4" O.D. tubing.  
in blow-mold carrying case.

### CT-808ML

CT-808M + CT-274 + CT-208

For 4mm/6mm/8mm/10mm/12mm/16mm/19mm O.D. tubing.  
in blow-mold carrying case.



### >>> CT-806A

For 1/4", 5/16", 3/8", 1/2", 5/8", 3/4" O.D. tubing.

### CT-806M

For 6mm/8mm/10mm/12mm/16mm/19mm O.D. tubing.

### CT-808A

For 3/16", 1/4", 5/16", 3/8", 1/2", 5/8", 3/4" O.D. tubing.

### CT-808M

For 4mm/6mm/8mm/10mm/12mm/16mm/19mm O.D. tubing.



## Multi-Size Tube Expander Set

### CT-A100 >>>

CT-A100H + CT-A100E + CT-274 + CT-208

**CT-A100H** Expander Handle.

**CT-A100E** Expander heads 7 size: 3/8", 1/2", 5/8", 7/8", 3/4", 1" & 1-1/8" O.D. Each head has 6 guide channels and rivets to assure regular capillary flow.

### CT-A200

CT-A100H + CT-A200E + CT-274 + CT-208

**CT-A100H** Expander Handle.

**CT-A200E** Expander heads 7 size: 10mm/12mm/16mm/19mm/22mm/25mm/28mm O.D. Each head has 6 guide channels and rivets to assure regular capillary flow.



### CT-A100E-35

Also we have extra 1-3/8" (35mm), 1-5/8" (41mm) O.D. for your choice.



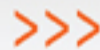
### CT-A100E-41



### CT-193 Set of 5 Swaging Punches

For 1/4", 5/16", 3/8", 1/2", & 5/8" O.D. tubing.

A / CT-93-10 for 5/8" O.D. B / CT-93-08 for 1/2" O.D.  
C / CT-93-06 for 3/8" O.D. D / CT-93-05 for 5/16" O.D.  
E / CT-93-04 for 1/4" O.D.



### CT-93-12

For 3/4" O.D.



### CT-94 3 in 1 Swaging Punches

For 1/2", 5/8" & 7/8" O.D. tubing.



### CT-93-14

For 7/8" O.D.



### CT-95 All in 1 Swaging Punches

For 1/4", 5/16", 3/8", 1/2" & 5/8" O.D. tubing.



- >>> **CT-122**  
**Ratchet Wrench-Standard Type**  
Cover 4 Size 1/4", 3/8", 3/16", 5/16"  
Square Ratchet.

- >>> **CT-123L**  
**Ratchet Wrench-Heavy Type**  
Cover 4 Size 9/16", 1/2" Hex, 1/4", 3/16"  
Square Ratchet.



- >>> **CT-3405**  
**Universal Adjustable Spanner Wrench**



- >>> **CT-351**  
**Fin Straightener**  
For 8", 9", 10", 12", 14" & 15"  
Spacings per inch.



- >>> **CT-352**  
**Stainless Steel**  
**Fin Straightener**



- >>> **CT-352L**  
**Stainless Steel**  
**Fin Straightener**



CT-M42



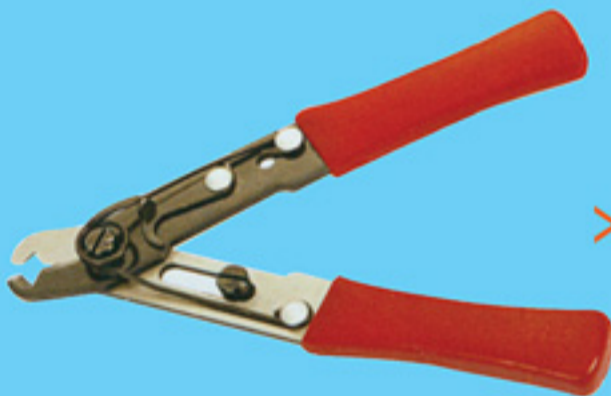
CT-S25

>>> **PVC PIPE CUTTER**

Item No.	Range(mm)
CT-S25	6~30
CT-M42	6~42

>>> **END CUTTING NIPPERS**

Item No.	Length(mm)	Range(mm)
AF-P8	216	2



>>> **CT-1104**  
Capillary tube cutter 5" (125mm)



>>> **CT-201**  
Pinch-off Plier 7"



>>> **CT-204**  
Pinch-off tool Capacity up to 3/8" O.D.



>>> **CT-208**  
Inner-outer reamer (Plastic body)  
Reaming capacity~3/16" to 1-1/2" O.D. (1/8"~1-1/4" nom)



>>> **CT-209**  
Inner-outer reamer (Zinc body)  
Reaming capacity~1/4" to 1-5/8"

## Can Tap Valves & Adapters

### Can Tap Valves



CT-337



CT-338

**CT-337**

Can: Any size.  
Outlet: 1/4" SAE.

**CT-338N**

Can: 1/4" SAE.  
Outlet: 1/4" SAE.

**CT-338**

Can: 12mmx1.5  
Outlet: 1/4" SAE.

**CT-339**

Can: 12mmx1.5  
Outlet: 1/4" SAE.

**CT-338J**

Can: 14mmx1.5  
Outlet: 1/4" SAE.

**CT-339J**

Can: 14mmx1.5  
Outlet: 10mm

**CT-338JB**

Can: 14mmx1.25  
Outlet: 1/4" SAE.

**CT-339JB**

Can: 14mmx1.25  
Outlet: 10mm

### Conversion Adapters



**CB-ACMEx04**

Conversion adapter for R134a 1/2" ACME, Manifold on connection to 1/4" cylinders.



**CB-04xACME**

Conversion adapter for R134a 1/4" ACME, Manifold on connection ACME cylinders.



**CB-04x14mm**

Conversion adapter for 14mm service, Couplers on connection to 1/4" hoses.



**CB-R410-V**

Conversion adapter with auto shut-off valve for 1/4" hose connector on connector to 5/16" R410 cylinders or system.



**CB-R410-04**

Conversion adapter for 1/4" hose connector on connector to 5/16" R410 cylinders or system.

### Line Piercing Valves



**CT-341**

Fit 3/16" thru 3/8" O.D.

### Auto Charging Adapters & Hoses



CT-135



**CT-10**

1/4" x 1/4"  
Swivel adapter



**CT-11**

1/4" x 3/16"  
Swivel adapter



**CT-12**

1/4" x 1/8"  
Swivel adapter



**CT-355**

1/4" x 1/8" Auto charging hose



**CT-356**

1/4" x 3/16" Auto charging hose



**>>> SOLDER UNION**

Item No.	Tube O.D. Inch
SU-02	1/8
SU-03	3/16
SU-04	1/4
SU-05	5/16
SU-06	3/8



>>> **TORQUE WRENCH**

Item No.	Specification
CT-188S-17	17mmx180kg/cm
CT-188S-22	22mmx420kg/cm
CT-188S-24	24mmx550kg/cm
CT-188S-26	26mmx550kg/cm
CT-188S-27	27mmx650kg/cm
CT-188S-29	29mmx650kg/cm

**CT-188S** >>>

17mmx180kg/cm 22mmx420kg/cm  
24mmx550kg/cm 27mmx650kg/cm

**CT-188S-R410**

17mmx180kg/cm 22mmx420kg/cm  
26mmx550kg/cm 29mmx650kg/cm

**CT-188S-R4**

26mmx550kg/cm 29mmx650kg/cm



## Aluminum Single 80mm Gauge Valve



CT-467G-L



CT-467G-H



CT-467L



CT-467H

## Brass Single 70mm Gauge Valve



CT-466G-L



CT-466G-H



CT-466



- To order manifold gauge sets with rubber protector, simply place "GP" after item number.
- To order 80mm Gauges with Brass Manifold set, simply place "80" after the item number.

## R12, R22 銅架錶組系列

### Brass R12, R22 Manifold 70mm Gauge Sets

- R12/R22 °C 高壓錶(0~500psi) / °C 低壓錶(-30~250psi) 外徑 70mm。
- 500~2500psi 加氣管組 / G(紅、藍、黃) 1/4"(2分) 45° 彎接頭 x 1/4"(2分) 直接頭。
- AV(紅、藍、黃) 1/4"(2分) 45° 彎逆止閥接頭 x 1/4"(2分) 直接頭。
- MV(紅、藍、黃) 1/4"(2分) 45° 彎接頭 x 1/4"(2分) 直接頭 x 手動閥。
- 附錶鉤。
- 四方紙盒裝~16組/件，手提吹氣盒裝~6組/件。
- 可選擇加錶套。



with sight glass

without sight glass



- To order 80mm Gauges with Brass Manifold set, simply place "80" after the item number
- To order manifold gauge sets with rubber protector, simply place "GP" after item number.

#### Standard Fittings

36英吋 (3尺)	CT-A536G
60英吋 (5尺)	CT-A560G
72英吋 (6尺)	CT-A572G

#### with Auto-Shut-off Valve

36英吋 (3尺)	CT-A536G-AV
60英吋 (5尺)	CT-A560G-AV
72英吋 (6尺)	CT-A572G-AV

#### with Manual-Shut-off Valve

36英吋 (3尺)	CT-A536G-MV
60英吋 (5尺)	CT-A560G-MV
72英吋 (6尺)	CT-A572G-MV



Auto-Shut-off Valve



Manual-Shut-off Valve

#### Standard Fittings

36英吋 (3尺)	CT-A636G
60英吋 (5尺)	CT-A660G
72英吋 (6尺)	CT-A672G

#### with Auto-Shut-off Valve

36英吋 (3尺)	CT-A636G-AV
60英吋 (5尺)	CT-A660G-AV
72英吋 (6尺)	CT-A672G-AV

#### with Manual-Shut-off Valve

36英吋 (3尺)	CT-A636G-MV
60英吋 (5尺)	CT-A660G-MV
72英吋 (6尺)	CT-A672G-MV



- To order manifold gauge sets with blow case, simply place "-L" after item number.



## Brass R404a, R407c, R507a, R134a Manifold 70mm Gauge Sets

R404a, R407c, R507a, R134a 2-way manifold gauge sets with hose connections for red, yellow and red are 1/4" SAE,

All hoses are designed and crimped for working pressure 600 bursting pressure 300.



with sight glass

without sight glass



- To order 80mm Gauges with Brass Manifold set, simply place "80" after the item number
- To order manifold gauge sets with rubber protector, simply place "GP" after item number.

### Standard Fittings

36"	CT-A536G-RU
60"	CT-A560G-RU
72"	CT-A572G-RU

### with Auto-Shut-off Valve

36"	CT-A536G-RUAV
60"	CT-A560G-RUAV
72"	CT-A572G-RUAV

### with Manual-Shut-off Valve

36"	CT-A536G-RUMV
60"	CT-A560G-RUMV
72"	CT-A572G-RUMV



Auto-Shut-off Valve



Manual-Shut-off Valve

### Standard Fittings

36"	CT-A636G-RU
60"	CT-A660G-RU
72"	CT-A672G-RU

### with Auto-Shut-off Valve

36"	CT-A636G-RUAV
60"	CT-A660G-RUAV
72"	CT-A672G-RUAV

### with Manual-Shut-off Valve

36"	CT-A636G-RUMV
60"	CT-A660G-RUMV
72"	CT-A672G-RUMV



- To order manifold gauge sets with blow case, simply place "-L" after item number.

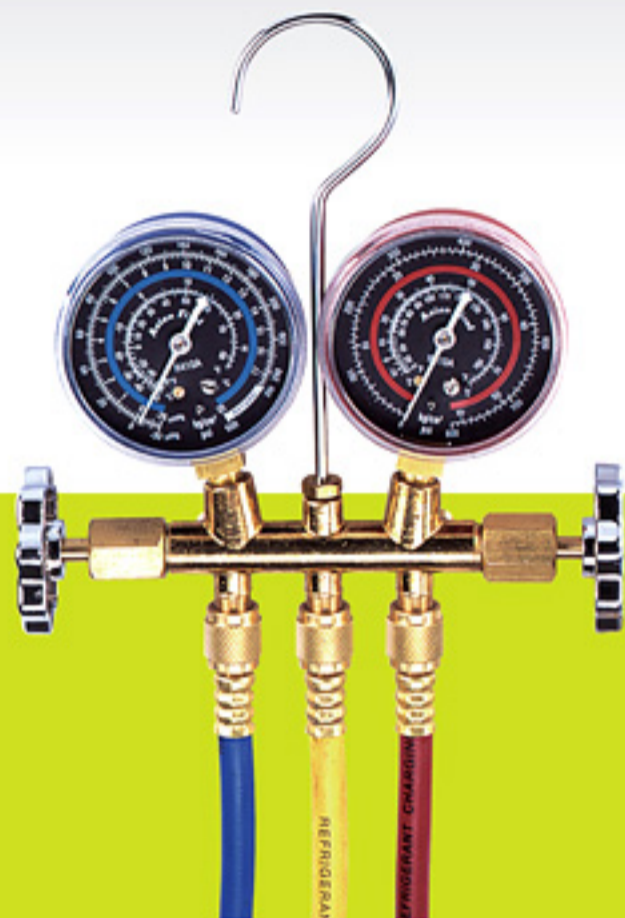
## Brass Dual R410a Manifold 70mm Gauge Sets

R410a 2-way manifold gauge sets with hose connections for red, yellow and blue are 1/4" SAE or 5/16" SAE,

All hoses are designed and crimped for working pressure 800 bursting pressure 4000.



with sight glass



without sight glass



- To order 80mm Gauges with Brass Manifold set, simply place "80" after the item number
- To order manifold gauge sets with rubber protector, simply place "GP" after item number.

### 1/4" SAE Connection (with CB-R410-V x2 & CB-R410-04 x1)

36"	CT-A536G-R4
60"	CT-A560G-R4
72"	CT-A572G-R4



auto shut off valves

### 1/4" SAE Connection (with CB-R410-V x2 & CB-R410-04 x1)

36"	CT-A636G-R4
60"	CT-A660G-R4
72"	CT-A672G-R4

### 5/16" SAE Connection

36"	CT-A536G-R410
60"	CT-A560G-R410
72"	CT-A572G-R410

### 5/16" SAE Connection

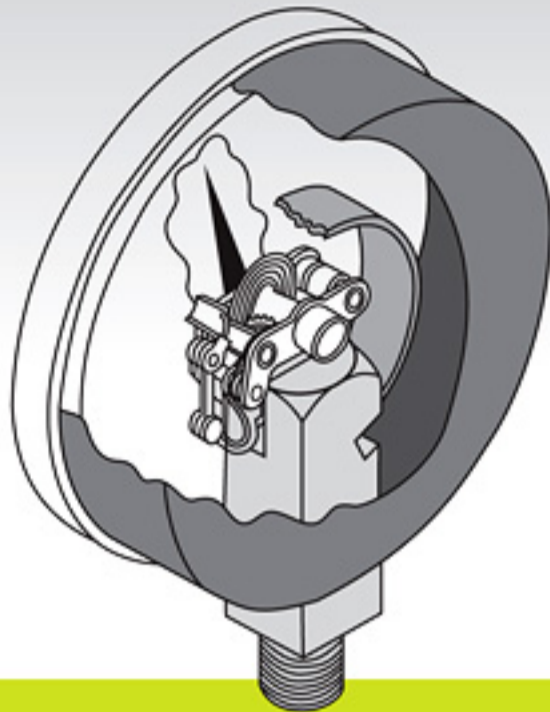
36"	CT-A636G-R410
60"	CT-A660G-R410
72"	CT-A672G-R410



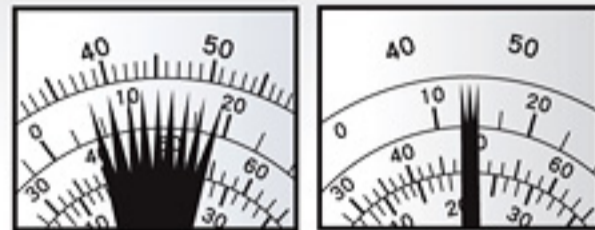
- To order manifold gauge sets with blow case, simply place "-L" after item number.

## Vibration Free Gauges

Our exclusive encapsulated silicone dampened movement .



### Competitors' Standard Gauge



### Vibration Free Gauges

- Provides steady and accurate pressure readings .
- Shock resistant movement seldom needs recalibration .
- Guaranteed not to LEAK FLUID .
- Guaranteed not to LOSE DAMPENING CHARACTERISTICS .

### GAUGE 80mm >>>

Refrigerant	Compound	Pressure
R12, R22, R134a (°F)	<b>RG-A250-VF</b>	<b>RG-A500-VF</b>
R12, R22, R134a (°C)	<b>RG-A250-VC</b>	<b>RG-A5000-VC</b>
R134a (°F, °C)	<b>RG-A134L-V</b>	<b>RG-A134H-V</b>
R410a (°F, °C)	<b>RG-A410L-V</b>	<b>RG-A410H-V</b>
R404a, 407c, 507a, 134a (°C)	<b>RG-A404L-VC</b>	<b>RG-A404H-VC</b>



### >>> GAUGE 70mm

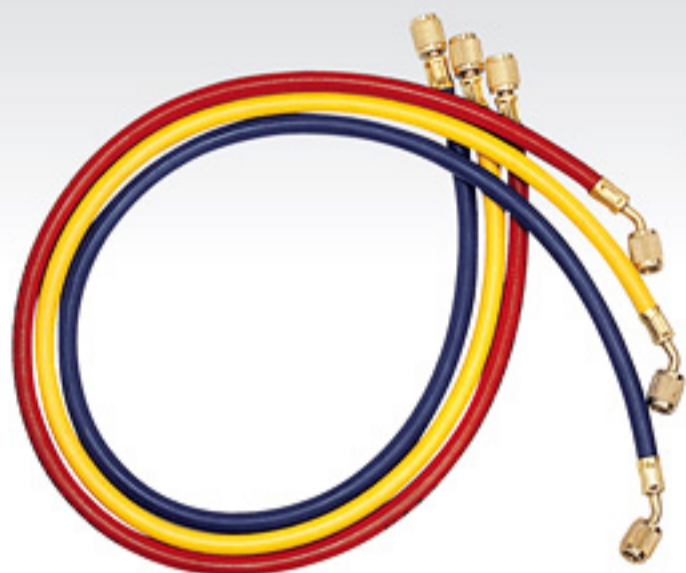


Refrigerant	Compound	Pressure
R12, R22, R134a (°F)	<b>RG-250-VF</b>	<b>RG-500-VF</b>
R12, R22, R134a (°C)	<b>RG-250-VC</b>	<b>RG-5000-VC</b>
R134a (°F, °C)	<b>RG-134L-V</b>	<b>RG-134H-V</b>
R410a (°F, °C)	<b>RG-410L-V</b>	<b>RG-410H-V</b>
R404a, 407c, 507a, 134a (°C)	<b>RG-404L-VC</b>	<b>RG-404H-VC</b>



- To order manifold gauge sets with rubber protector, simply place "GP" after item number.

## Charging Hose with 1/4" SAE Fittings

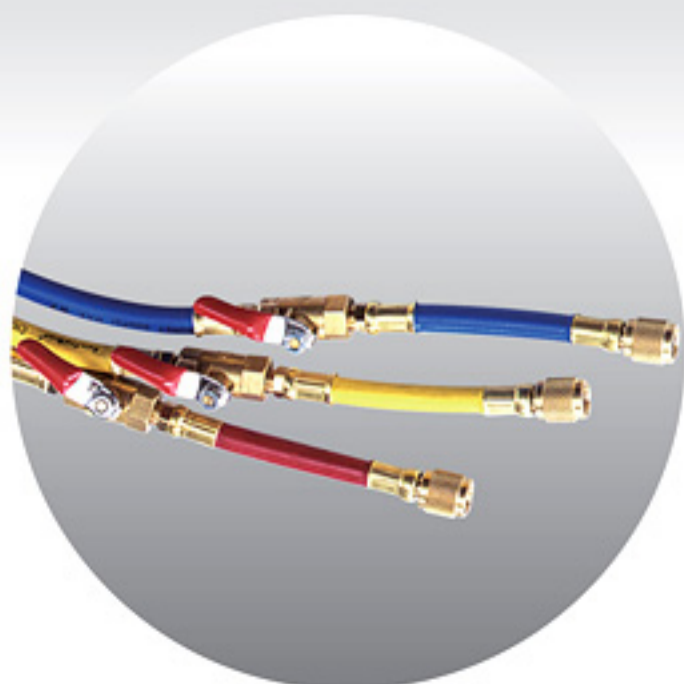


### >>> Charging Hose with 1/4" SAE Fittings

<b>Standard Hose</b> Working Pressure 500 Bust 2500	<b>Premium Hose</b> Working Pressure 600 Bust 3000	<b>Heavy Duty</b> Working Pressure 800 Bust 4000
CT-336RYB	CT-P336RYB	CT-H336RYB
CT-360RYB	CT-P360RYB	CT-H360RYB
CT-372RYB	CT-P372RYB	CT-H372RYB

### >>> Charging Hose 1/4" SAE with Automatic Shut-Off Valve Fittings

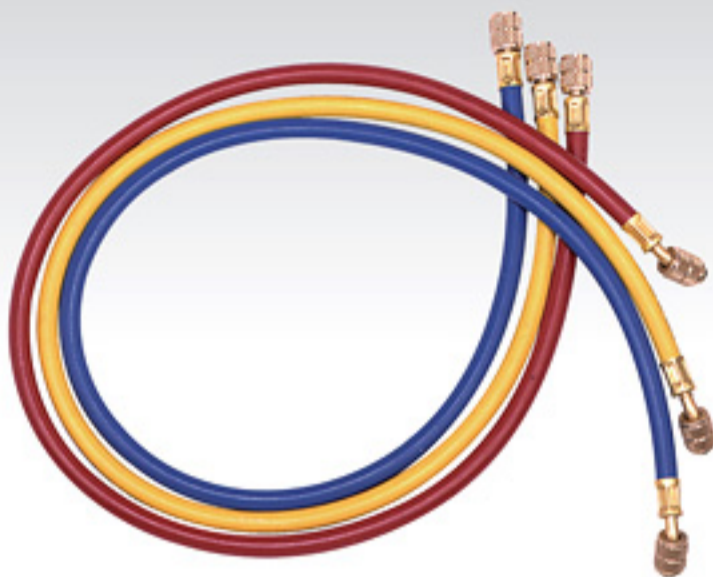
<b>Standard Hose</b> Working Pressure 500 Bust 2500	<b>Premium Hose</b> Working Pressure 600 Bust 3000	<b>Heavy Duty</b> Working Pressure 800 Bust 4000
CT-336RYB-AV	CT-P336RYB-AV	CT-H336RYB-AV
CT-360RYB-AV	CT-P360RYB-AV	CT-H360RYB-AV
CT-372RYB-AV	CT-P372RYB-AV	CT-H372RYB-AV



### >>> Charging Hose 1/4" SAE with Manual Shut-Off Valve Fittings

<b>Standard Hose</b> Working Pressure 500 Bust 2500	<b>Premium Hose</b> Working Pressure 600 Bust 3000	<b>Heavy Duty</b> Working Pressure 800 Bust 4000
CT-336RYB-MV	CT-P336RYB-MV	CT-H336RYB-MV
CT-360RYB-MV	CT-P360RYB-MV	CT-H360RYB-MV
CT-372RYB-MV	CT-P372RYB-MV	CT-H372RYB-MV

## R134a Auto A/C Charging Hoses



### >>> R134a Charging Hose with 1/2" ACME-F & 14mm-M Auto A/C Fittings

Premium Hose Working Pressure 600 Bust 3000	Heavy Duty Working Pressure 800 Bust 4000
CT-P336RYB-ACME	CT-H336RYB-ACME
CT-P360RYB-ACME	CT-H360RYB-ACME
CT-P372RYB-ACME	CT-H372RYB-ACME

### >>> R134a Charging Hose with Metric Fittings (Japanese Standard)

Premium Hose Working Pressure 600 Bust 3000	Heavy Duty Working Pressure 800 Bust 4000
CT-P336RYB-J	CT-H336RYB-J
CT-P360RYB-J	CT-H360RYB-J
CT-P372RYB-J	CT-H372RYB-J



### >>> R134a Charging Hose with 1/2" ACME-F & 14mm-M Auto A/C Fittings & Automatic Shut-Off Valve

Premium Hose Working Pressure 600 Bust 3000	Heavy Duty Working Pressure 800 Bust 4000
CT-P336RYB-ACME-V	CT-H336RYB-ACME-V
CT-P360RYB-ACME-V	CT-H360RYB-ACME-V
CT-P372RYB-ACME-V	KCT-H372RYB-ACME-V

Service Hose Replacement Part >>>



**HP-1**  
Rubber Gasket



**HP-2**  
Teflon Gasket



**HD-1**  
Brass Screw Depressor



**HD-2**  
Brass Hose Depressor

## R134a Service Couplers

### Automatic & Manual Service Couplers



**QC-AMH4**  
1/4" SAE



**QC-AML4**  
1/4" SAE



**QC-AMH**  
14mm x 1.5



**QC-AML**  
14mm x 1.5

### Manual Service Couplers



**QC-MH4**  
1/4" SAE



**QC-ML4**  
1/4" SAE



**QC-MH**  
14mm x 1.5



**QC-ML**  
14mm x 1.5

### Automatic Service Couplers



**QC-12**  
1/4" SAE



**QC-13**  
Japanese Standard



**QC-14**  
1/4" SAE



**QC-15**  
14mm